

Dinosaure ou pas ?

Parmi les images suivantes, repère celles qui ne représentent pas des dinosaures.

Un indice, il y en a 5 !



TRICÉRATOP



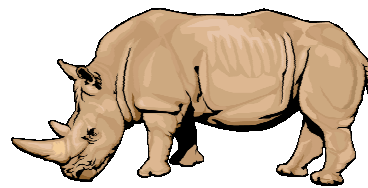
PTÉROSAURE



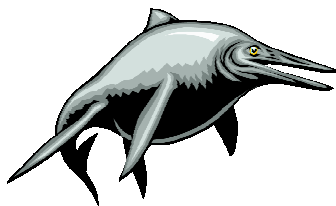
SPINOSAURE



SAUROPODE



RHINOCÉROS



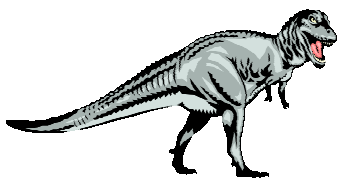
ICHTHYOSAURE



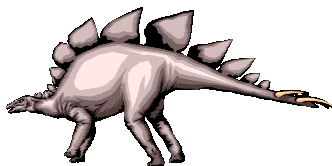
ANKYLOSAURE



MOSASAURE



TYRANNOSAURE



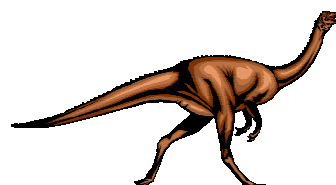
STÉGOSAURE



RAPTOR



ALLIGATOR



ORNITHOMIMIDÉ